

# PAUL'S PARISH NEWS



SAINT PAUL'S EVANGELICAL LUTHERAN CHURCH  
Breinigsville, PA

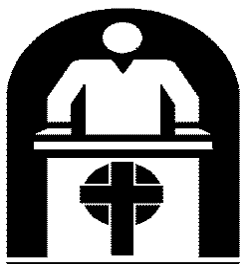
---

**DECEMBER 2024**



St. Paul's Evangelical Lutheran Church  
8227 Hamilton Boulevard  
Breinigsville, PA 18031  
Telephone: 610-398-7000

*PAUL'S PARISH NEWS* is published by St. Paul's Evangelical Lutheran Church



Dear Members and Friends,

December marks the coming of two seasons of the church year: Advent and Christmas (yes, Christmas is a season of 12 days). Advent means coming or arrival. During these four weeks before Christmas we prepare to celebrate the coming of Jesus, the unexpected King. He was not born in a palace but in the little town of Bethlehem. Perhaps

only a few people knew of his birth, until angels announced the unexpected event to some startled shepherds. This King did not wear a golden crown, but a crown of thorns when he died on the cross for you. And then – in a joyfully unexpected event – he rose from the dead!

Christmas commemorates the birth of our Lord and Savior Jesus Christ. It is a time to remember the joy and wonder of that first Christmas nearly two thousand years ago, a time to celebrate the presence of Christ in our lives today, and a time to share the “glad tidings of great joy” with our world.

Pope Telesphorus, who died in 138, established Christmas as a movable religious feast. During the fourth century, Pope Julius I set December 25 as the date on which Christmas should be celebrated. In 567, at the Council of Tours, Christmas became a twelve-day season, lasting from December 25 through January 5. The next day, January 6, is called the Festival of the Epiphany of Our Lord.

Christmas is a time to celebrate the great love God has for us, to marvel at the ways in which God continues to work in our lives, and to praise God for our blessings. Then, like the shepherds in Bethlehem, we can go and share the good news that Jesus Christ is born.

Remember that Christmas lasts for twelve days. Allow yourself time to savor Christmas – the sights, smells, sounds, tastes, joy, love, peace, and wonder.

Come celebrate with us on Christmas Eve at 4:30pm or 7:00pm (with half hour prelude music before each service – 4:00 and 6:30)

Pastor Miller

**Sunday, December 29, 2024 there will only be one worship service at 10:30 a.m. There will be no Sunday School.**

# A MESSAGE FROM YOUR FINANCIAL SECRETARY

The end of 2024 is almost here. In order to make sure all your contributions are posted on your Year End Giving Statement, it is important to have your 2024 contributions received in the church no later than Sunday, December 29, 2024 or if mailed, they must be postmarked by December 31, 2024. Any contributions that arrive after that, starting in January, will be posted on your 2025 giving statement.

Sandi Wagaman

## CHURCH OFFICE

The church office hours from December 24<sup>th</sup> to January 2, 2025 will be open at limited hours. You may use this time to drop off your yearend giving or pick up your poinsettia. Please call the office at 610-398-7000 to make sure someone is available. The office will be closed Christmas Day and News Years Day.

## SIGN-UP SHEETS FOR 2025 BULLETIN & ALTAR FLOWER SPONSORSHIPS

We are in need of bulletin sponsorships for 2025. The price is \$20.00. Call the church office to pick a date to sponsor or check the bulletin board for available dates. Fill out the white slip with your name, date you are sponsoring and the wording and place it in the folder under the signup sheet.

Altar Flower Sponsorships are: one vase is \$24.00 or both vases are \$48.00. If you are sponsoring both vases, **PLEASE** sign your name to **BOTH LINES**. Fill out the blue slip with your name, date you are sponsoring and the wording and place it in the folder under the signup sheet. Call the church office to pick a date to sponsor or check the bulletin board for available dates.

## **UPCOMING EVENTS FROM THE FELLOWSHIP COMMITTEE**

**November 24** – Potluck Lunch & Decorating for Christmas

**December 1** – Nativity Display 11:30 a.m. – 2:00 p.m.

**December 6** – Meal & Movie – Whit Christmas

**December 15** – Blue Christmas Service at 2:00 p.m.

**December 24** – Worship services

Family Service at 4:30 p.m. Prelude starts at 4:00 p.m.

Festival Service at 7:00 p.m. Prelude starts at 6:30 p.m.

### **NATIVITY DISPLAY SUNDAY, DECEMBER 1, 11:30 AM-2:00 PM**

We are again inviting members of St. Paul's to bring to the church their Nativity displays (as many as you want) that you use to decorate your house at Christmastime (no outdoor displays!). They will be displayed on tables in Fellowship Hall. Someone will be at the church on Saturday (Nov. 30<sup>th</sup>) from 10:00am to noon if you want to bring them in ahead of time. You may also bring them in on Sunday morning before church begins. Light refreshments will be served.

### **BLUE CHRISTMAS**

**On December 15<sup>th</sup> at 2:00pm** we will have a Blue Christmas service with Holy Communion. For many, the Christmas season is not one of joy and celebration because of loss – loss of a loved one, loss of employment, weariness of health, the pain of isolation. All this can make us feel alone. Come join us in sharing and hearing prayers, scripture, and music that acknowledges God's presence is for those who mourn or struggle and that God's Word shines light in our darkness.

## 2024 LEHIGH MISSION DISTRICT CHRISTMAS INGATHERING

All donations should be brought to the church by Sunday, December 1st.

Contact Sandi Wagaman if you have questions or would like to volunteer to help with delivery. (610-203-8085).

### ADVENT EVENING SERVICES

Zion-Lehigh Lutheran Church will be holding Advent Wednesday evening worship services **December 4, 11, 18** beginning at **6:00pm** with a simple meal (**bring something to share**). People will meet in the fellowship hall for the meal and a short worship will follow. For questions call the church office at 610-395-1215.



I want to wish members of the St. Paul's a very Merry Christmas and a happy and healthy new year.

Pastor Miller



Thank you to all the volunteers who help with the worship services, choirs, committees, scheduling, running errands, trash and recycling, kitchen and staff. You all do so much and you need a **THANK YOU**. A lot of this helps to make my job easier. Thank you to Sharon for covering the office for me while I am recovering from my knee replacement surgery. I don't know what I would do without her. Everyone, have a Merry Christmas.

Cindy

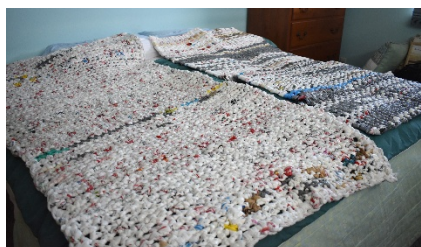
## PRAYER SHAWL GROUP NEWS



In addition to making shawls, every year the Prayer Shawl Group works on a charity knit/crochet project – this year we did two!

Making chemo hats is one of the charity projects that we finished in November. We made a total of 51 hats, 50 of which were delivered to LVHN Cancer Center on November 11.

Project Warm-Up America is our second project for the year– where we knitted or crocheted 7 x 9 rectangles. The rectangles are sewn into blankets which are distributed to families in need through local charities. We teamed up with Lutheran Home Stitchers on this project, and between our two groups, we sent in 315 rectangles. (Lutheran Home Stitchers made 119, and the Prayer Shawl Group made 196.)



Our ongoing project is Homeless Sleeping Mat ministry – where we make sleeping mats by processing plastic bags into plarn. In November, we delivered two more mats to Caring D.A.M. Hearts. A Plarn working session is held the 3<sup>rd</sup> Tuesday of every month at 1:30PM. If you are not a crafter or

maker – you can help process the plastic bags – either at a working session or at home. Note that we will not have a Plarn session in December. Our next session will be **January 21 at 1:30PM**. (Unfortunately, with limited closet storage space, we cannot accept any more plastic bag donations until we process what we have on hand.)

A very big thank you to our dedicated makers who knitted and crocheted rectangles and chemo hats. Also thank you to our wonderful Plarn team – who show up on the 3<sup>rd</sup> Tuesday of each month and work away creating plarn and sleeping mats. Lastly, we want to gratefully acknowledge the financial assistance we received from a Thrivent Action Team grant, used to purchase chemo hat-specific yarn and also to ship rectangles.

## WOMEN OF THE EVANGELICAL LUTHERAN CHURCH [WELCA]

Thankoffering Sunday was for November 17<sup>th</sup> this year and offering envelopes were given out with the bulletins. A report from Thankoffering Sunday will be in the January 2025 newsletter.

The In-gathering is scheduled for Wednesday, December 4, 2025. St. Paul's has 2 specific organizations that we will be gathering items for. 7 gift slips were received from Good Shepherd and 10 gift slips were received from Topton Home and the gifts are being received. We have also collected specific items for the YMCA Warming Station and Boys and Girls Club of Allentown.

Our Soup and Sandwich Sunday will be the first Sunday in January, January 5, 2025, with a snow date of January 12, 2025. Judy Wanfried will be our speaker and discuss *The Last Supper Art*.

NEPA WELCA Spring Justice Event theme *Protecting Our Children* is scheduled for March 29, 2025, at Christ United Lutheran Church in Ashland, PA.

NEPA WELCA 35<sup>th</sup> Annual Convention is scheduled for June 14, 2025, at St. John's Nazareth; topic *Renew Yourself with Gods Word*:

*The Flame* will be published in the beginning of January which will have the registration form for the Spring Justice Event as well as other information from the NEPA WELCA.

### ALL WOMEN ARE INVITED TO THESE EVENTS

Our November Bible study was on *Receiving grace, a study of Ephesians, Grace-filled living, ancient and new, Session three*, by Heidi Haverkamp. This was the third session of Gather's fall Bible study series on the Letter to the Ephesians. In this three-part study, we explored whether grace is real (September), how God's power works in us (October), and grace-filled living, ancient and new (November).

Join us on Wednesday, December 11, 2024, at 9:30 a.m. for our next meeting and continued discussion about how God's power works in us.

## **WELCA Soup and Sandwich Luncheon, January 5, 2025 Judith Wanfried, Speaker Biography**

Having been invited to speak at St. Paul's by the ladies of the WELCA group, let me introduce myself. My name is Judith Wanfried and I am the niece of Martha Lindenmuth. I grew up in Palmyra PA, attended Hershey Junior College and Kutztown State College (no it was not yet a university!) graduating in 1965 with a degree in art education. I taught art in the Northern Lebanon School District at the elementary level for 38 years, retiring in 2003. In addition, I was a founding partner of Scaramouche Costumes in the Lehigh Valley where we designed and built theatrical costumes. As a member of St. Stephen's Lutheran Church in Allentown I began giving talks on Christian art which I continued with the adult forum at Christ Lutheran Church after the merger of the two churches. I currently live in Myerstown in Lebanon County. I regularly visit my aunt in Breinigsville and continue to be a member of Christ Lutheran Church, Allentown.

Topic: the Last Supper

Date: January 5, 2025. In the event of snow, the date is January 12, 2025

## **ST. PAUL'S CEMETERY SUPERINTENDENT POSITION**

St. Paul's Cemetery Association is looking for a superintendent. This is a paid position, and the Job Description is posted on the bulletin board in case you would be interested. It is a position that generally doesn't take too much time, and is driven by sales, burials, inquiries, and some maintenance.

## **ADVENT OFFERING ENVELOPE**



Enclosed in the newsletter is your Advent Offering Envelope. Extra envelopes are available in the rack at the sanctuary door.



## **WINTER CLOTHES DRIVE DEADLINE IS DECEMBER 1, 2024**

With the large success of the school supply drive, the girls (Sathana & Sydney) would like to continue helping the Bethlehem Valley Youth House and/ or other local homeless shelters by raising money and items through the end of November. As the weather starts to get colder, one of the most essential items at these local shelters is winter clothing and jackets. We're looking for jackets, mittens, sweaters, long-sleeve shirts, etc.

Mostly teenage/young adult clothing would be great. A volunteer at the shelter said they have kids of all different sizes of clothing so anything is appreciated.

A box is setup under the coat rack with a sign on it marked coat drive.

## **WALKING WITH THOSE WHO GRIEVE**

The holiday season can be difficult for people who are grieving a death or deep loss. As Christians, we do well to be aware that not everyone feels wholehearted joy this time of year. How can we support them?

Grief counselor Alan Wolfelt explains that walking alongside — “companioning” — one who grieves “is not about assessing, analyzing, fixing or resolving another’s grief. Instead, it is about being totally present to the mourner, even being a temporary guardian of [his or] her soul.”

Among Wolfelt’s 11 tenets for “companioning the bereaved”:

- It’s about being present to another person’s pain, not taking it away.
- It’s about listening with the heart, not analyzing with the head.
- It’s about walking alongside, not leading.

More tips are available at [www.centerforloss.com/2019/12/](http://www.centerforloss.com/2019/12/)

May God bless you as you share the love of the Christ Child, his caring parents and his compassionate heavenly Father with people who are hurting.

## **USHERS/WORSHIP ASSISTANTS ARE NEEDED**

We are in need of people to help with the 10:30 a.m. worship service. For the service, worship is the same as before Covid 19 – i.e. hymns are sung, offering is collected in the pew, and communion is taken at the altar. You will be handing out the bulletin, helping to collect offering, and directing the congregation to the altar and handing them a communion cup. If you would be willing and interested in helping, please contact Steph Wagaman at 610-395-0355 or [stepbillwagaman@rcn.com](mailto:stepbillwagaman@rcn.com) or call the church office at 610-398-7000.

## **HOSPITALIZED?**

Parish Code for hospitalized parishioners is 321. Please give this code when you are admitted to the hospital so the pastor can be made aware that you are a patient and can administer the pastoral care you require while you are hospitalized.

Please take note, that if you are admitted on a Thursday night, Friday, Saturday, or Sunday, the pastor will not be aware that you are hospitalized until Monday mid-morning, since the church does not have office hours on Friday, and the hospital pastoral care office is not available on Saturday or Sunday.

This means, if you would like the Pastor to know you are hospitalized on the weekend, please call the church office or the Pastor.

## **CARD MINISTRY**

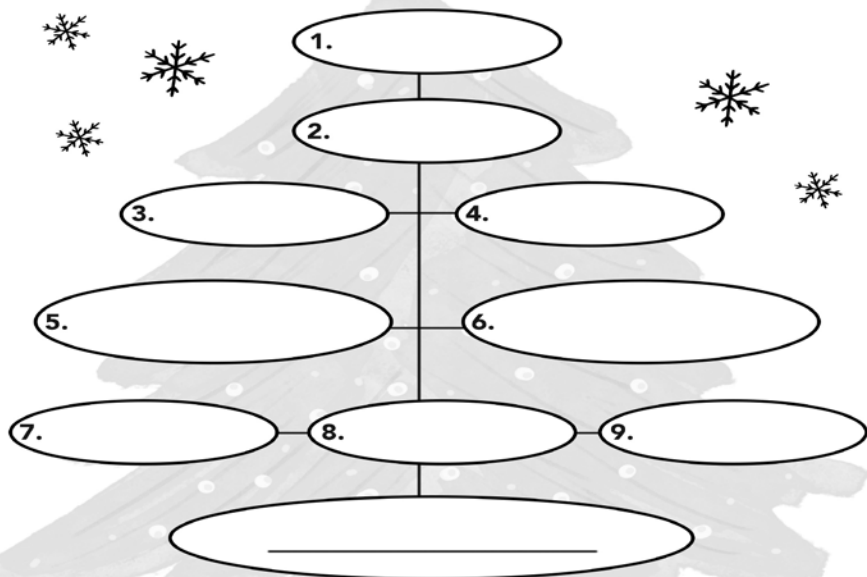


Here at St. Paul's we send cards to members of the congregation who are ill or in need of a cheerful word. These cards are on the table in the narthex. When you are here on a Sunday, or during the week, check the table to see if there is a card. Please sign your name and help bring a smile to a fellow member.

# Puzzle!

Write the answer to each clue in the correct circle.

Then jot down the first letter of each answer and unscramble those letters to form a word about this season. Write that answer at the bottom of the tree.



## CLUES

1. You trim this at Christmas.
2. One who governs
3. The first word of a popular carol, it means "Listen!"
4. You burn this to make the air sweet.
5. "For unto us is born this day a \_\_\_\_\_ ..."
6. She was betrothed to Joseph.
7. Shepherds heard them sing.
8. A Christmas song
9. 'Tis the \_\_\_\_\_ to be jolly!"

Answers: 1. tree, 2. ruler, 3. hark, 4. incense, 5. Savior, 6. Mary, 7. angels, 8. carol, 9. season; Christmas



3 Melanie Dimovitz	16 Marion Reichard
6 Amy Mutis	17 Margaret Stoudt
7 Andrew Bruchak	19 Frank Bennighoff
8 Calvin Fetherolf	25 Mary Ann Spengler
11 Betty Marchetti	29 Carol Derr-Breinig
12 Heather Sedlak	30 Richard Sicher
13 Mark Strauss	



11 Jerry & Heather Sedlak
19 Patrick & Sommer Cope

## THE LIGHT OF LIFE

Most sand comes from coral and rocks that get ground into tiny grains. But in a few places, like some beaches of Japan, the bits of sand are shells or skeletons that once housed single-celled organisms. A magnifying glass reveals their star shape: a rounded middle and five or more spines, like a sea star.

These unique creatures live on undersea reefs and share their interior with algae called diatoms, which convert light into carbohydrates and oxygen through photosynthesis. The star points let light into the exoskeleton; in turn, diatoms produce energy to feed them both. When these organisms die, the star skeletons wash onto beaches, protecting the islands even after their own lives end. Our amazing God designed astounding creatures!

This same Creator made us able to take in light from Christ. Jesus said, “I am the light of the world. Whoever follows me ... will have the light of life” (John 8:12). When we receive his light, it becomes in us the “energy” we need to do good: to love others, care for people in need, appreciate nature — including star sand! — and give glory to the Artist of this entire incredible world.

—Heidi Hyland Mann

# THANK YOU

Dear Members,

Many thanks for your generous donation to Holy Trinity Memorial Lutheran Church, 604 Fourth Street, Catasauqua, PA to the Summer Lunch Program in the park.

Your Generosity is appreciated by our entire church community. May God Bless you on your faith journey.

Sincerely,

Robin McCloud, Treasurer and

Members of Holt Trinity Memorial Lutheran Church

## THAT'S A (RE)WRAP!

The Reintgen family in North Carolina will always remember Christmas 2023. At 3 a.m. on December 25, their 3-year-old son woke them up, asking for scissors to open his new action-figure toy. “That’s when we realized something had gone terribly wrong,” said Scott, his dad. A quick trip downstairs revealed a mess of unwrapped gifts under the family’s Christmas tree. “There was not one thing that he left unscathed,” Scott said. The boy, in his defense, said he was just trying to help everyone know what they’d received.

With only hours until their other children awoke, the Reintgens were determined to save Christmas. Mom Katie raced to rewrap gifts, even managing to get most nametags back on the correct packages. Instead of being angry, the parents found humor in the ordeal. Afterward, they explained to their son the joy that people experience from receiving — and opening — their own presents.

Morals of the story? Remember this 3-year-old when you get overeager for certain parts of the holidays. Don’t rush through anything, and let others enjoy Christmas at their own pace too. When something goes wrong, don’t panic. Like the Reintgens, find joy in any unexpected glitches and grins you encounter throughout the season.

—Stephanie Martin

# CHRISTIAN SYMBOL

**ADVENT COLORS** — One of the season’s symbolic colors is blue, representing hope. During Advent, we wait in hope to celebrate again God’s coming in human form. We also look forward in hope to Christ’s coming in glory at the end of the age. Purple symbolizes the royalty of Jesus, the coming Prince of Peace, and the penitence with which we receive him. Some congregations also use pink or white candles in Advent wreaths, with pink symbolizing joy and white symbolizing the Christ Child.



## LOOK UPON LOVE

Let us then meditate upon the Nativity just as we see it happening in our own babies. I would not have you contemplate the deity of Christ, the majesty of Christ, but rather his flesh. Look upon the baby Jesus. Divinity may terrify people. Inexpressible majesty will crush them. That is why God took on our human flesh and blood, that God should not terrify us but rather that with love and favor God would console and comfort us.



—Martin Luther

## EMMAUS CHORALE PRESENTS

***Welcome Yole!***

**Donald Ryan, Director**

### A HOLIDAY CONCERT

Featuring

Selections from Benjamin Britten’s *A Ceremony of Carols* with harpist  
Andrea Wittchen

and other sacred and secular favorites such as  
Robert Young’s “There Is No Rose of Such Virtue” \* Morten Lauridsen’s  
“O Magnum Mysterium” \* Herbert Howells’ “A Spotless Rose” \* Irving  
Berlin’s “Sleigh Ride” \* “Let it Snow” and more!

Faith Presbyterian Church

3002 North 2<sup>nd</sup> St., Emmaus, PA

Free will offering \* reception following in fellowship hall



# CLUES ABOUT CHRISTMAS

The Old Testament contains many details about Jesus' birth.  
Can you uncover what Isaiah prophesied?

Directions: Use the code to write the letters and complete Isaiah 9:6-7, NIV.

A	B	C	D	E	F	G	H	I	J	K	L	M
1	2	3	4	5	6	7	8	9	!	@	#	\$
N	O	P	Q	R	S	T	U	V	W	X	Y	Z
%	^	&	*	(	)	-	?	>	<	:	;	{

For to us a 3 8 9 # 4 is 2 ^ ( % , to us a ) ^ %

is 7 9 > 5 % , and the government will be on his shoulders.

And he will be called Wonderful 3 ^ ? % ) 5 # ^ ( ,

\$ 9 7 8 - ; God, Everlasting Father, Prince of Peace. Of the

greatness of his government and & 5 1 3 5 there will be no 5 % 4 .

He will reign on David's - 8 ( ^ % 5 and over his @ 9 % 7 4 ^ \$ ,

establishing and upholding it with ! ? ) - 9 3 5 and righteousness

from that time on and 6 ^ ( 5 > 5 ( . *Isaiah 9:6-7, NIV*

Answers: child, born, born, given, son, given, Counselor, Mighty, peace, end, throne, kingdom, justice, forever

**DEADLINE FOR THE NEXT  
NEWSLETTER IS  
DECEMBER 8, 2024**

**PLEASE HAVE YOUR  
ARTICLES SUBMITTED TO  
THE CHURCH OFFICE  
BY THIS DATE.**

... and you shall call his name  
**Jesus** for he will save his  
people from their sins.  
Matthew 1:21, ESV



---

**CHURCH OFFICE: 610-398-7000**  
**HOSPITAL CODE: #321**  
**HANDICAPPED ACCESSIBLE**  
**EMAIL: [office@stpaulsbbv.org](mailto:office@stpaulsbbv.org)**  
**Website: [www.stpaulsbbv.org](http://www.stpaulsbbv.org)**

**STAFF**

Pastor..... The Rev. Carey L. Miller  
Organist/Choir Director ..... Ms. Judy Noll  
Handbell Director..... Mr. Richard Steltz  
Parish Secretary ..... Mrs. Cindy Krasnansky



# December 2024      St. Paul's Lutheran Church

SUNDAY	MONDAY	TUESDAY	WEDNESDAY	THURSDAY	FRIDAY	SATURDAY																																										
<b>1 FIRST SUNDAY OF ADVENT</b> 9:00 a.m.-Worship 9:15 a.m.-Sunday School 10:30 a.m.-Worship 11:30 a.m.-2:00 p.m. Nativity Display 4:30 p.m.-Creative Learning Labs Recital	<b>2</b> 9:30 a.m.-Bible Study 10:30 a.m.-Christmas Ingathering Sorting	<b>3</b>	<b>4</b> 9:00 a.m.-10:30 a.m.-Deliver Lehigh Mission District Christmas Ingathering Items To St. John's Lutheran, Emmaus	<b>5</b> 9:30 a.m.-TOPS 6:15 p.m.-Joyful Ringers 7:30 p.m.-Choir	<b>6</b> 6:00 p.m.-Meal 7:00 p.m.-Movie-White Christmas	<b>7</b>																																										
<b>8 SECOND SUNDAY OF ADVENT</b> 9:00 a.m.-Worship 9:15 a.m.-Sunday School 10:30 a.m.-Worship <b>NEWSLETTER DEADLINE</b>	<b>9</b> 9:30 a.m.-Bible Study	<b>10</b>	<b>11</b> 9:30 a.m.-W-ELCA 7:00 p.m.-Council	<b>12</b> 9:30 a.m.-TOPS 6:15 p.m.-Joyful Ringers 7:30 p.m.-Choir	<b>13</b>	<b>14</b> 12:00 p.m.-Private Party In The Social Hall																																										
<b>15 THIRD SUNDAY OF ADVENT</b> 9:00 a.m.-Worship 9:15 a.m.-Sunday School 10:00 a.m.-Blood Pressure Check 10:30 a.m.-Worship 2:00 p.m.-Blue Christmas Service	<b>16</b> 9:30 a.m.-Bible Study 1:00 p.m.-Worship & Music Committee	<b>17</b> 6:30 p.m.-Haafsville Board Meeting	<b>18</b>	<b>19</b> 9:30 a.m.-TOPS 6:15 p.m.-Joyful Ringers 7:30 p.m.-Choir	<b>20</b>	<b>21</b>																																										
<b>22 FOURTH SUNDAY OF ADVENT</b> 9:00 a.m.-Worship 9:15 a.m.-Sunday School 10:30 a.m.-Worship 11:30 a.m.-Pageant Rehearsal	<b>23</b> 9:30 a.m.-Bible Study	<b>24</b>  <i>Christmas Eve</i> 4:30 p.m.-Family Service 7:00 p.m.-Festival Service (Prelude Music Starts A Half Hour Before Each Service)	<b>25 OFFICE CLOSED</b> 	<b>26</b>	<b>27</b>	<b>28</b>																																										
<b>29 FIRST SUNDAY OF CHRISTMAS</b> 10:30 a.m.-Worship	<b>30</b>	<b>31</b> 				<b>January 2025</b> <table style="margin-left: auto; margin-right: auto; border-collapse: collapse;"> <tr> <td style="border: none;">S</td> <td style="border: none;">M</td> <td style="border: none;">T</td> <td style="border: none;">W</td> <td style="border: none;">T</td> <td style="border: none;">F</td> <td style="border: none;">S</td> </tr> <tr> <td style="border: none;"></td> <td style="border: none;"></td> <td style="border: none;"></td> <td style="border: none;"></td> <td style="border: none;">1</td> <td style="border: none;">2</td> <td style="border: none;">3</td> </tr> <tr> <td style="border: none;">5</td> <td style="border: none;">6</td> <td style="border: none;">7</td> <td style="border: none;">8</td> <td style="border: none;">9</td> <td style="border: none;">10</td> <td style="border: none;">11</td> </tr> <tr> <td style="border: none;">12</td> <td style="border: none;">13</td> <td style="border: none;">14</td> <td style="border: none;">15</td> <td style="border: none;">16</td> <td style="border: none;">17</td> <td style="border: none;">18</td> </tr> <tr> <td style="border: none;">19</td> <td style="border: none;">20</td> <td style="border: none;">21</td> <td style="border: none;">22</td> <td style="border: none;">23</td> <td style="border: none;">24</td> <td style="border: none;">25</td> </tr> <tr> <td style="border: none;">26</td> <td style="border: none;">27</td> <td style="border: none;">28</td> <td style="border: none;">29</td> <td style="border: none;">30</td> <td style="border: none;">31</td> <td style="border: none;"></td> </tr> </table>	S	M	T	W	T	F	S					1	2	3	5	6	7	8	9	10	11	12	13	14	15	16	17	18	19	20	21	22	23	24	25	26	27	28	29	30	31	
S	M	T	W	T	F	S																																										
				1	2	3																																										
5	6	7	8	9	10	11																																										
12	13	14	15	16	17	18																																										
19	20	21	22	23	24	25																																										
26	27	28	29	30	31																																											

**WORSHIP ASSISTANTS  
December 2024**

If you cannot fulfill an assigned duty, please call the church office at 610-398-7000 or the  
Council Person of the Month – Sharon Bortz 610-248-5385

**Sunday, December 1, 2024**

**9:00AM**

(None)

**10:30AM**

**Ushers:** Lacey Edwards, Amy Williams  
**Altar Guild:** Amy Williams  
**Communion Asst:** Sandi Wagaman  
**Communion Bread:** Sandi Wagaman  
**Greeter:** Bruce Wagaman  
**Lay Asst:** Sharon Bortz  
**Reader:** Dick Steltz

**Sunday, December 8, 2024**

**9:00AM**

(None)

**10:30AM**

**Ushers:** Zack Dimovitz, Peggy Saylor  
**Altar Guild:** Rosemary Lehman  
**Communion Asst:** Sharon Bortz  
**Communion Bread:** Melanie Dimovitz  
**Greeter:** Peggy Saylor  
**Lay Asst:** Bob Bruchak  
**Reader:** Rosemary Lehman

**Sunday, December 15, 2024**

**9:00AM**

(None)

**10:30AM**

**Ushers:** Cal Fetherolf, Ken Ritter  
**Altar Guild:** Janine Ritter  
**Communion Asst:** Daisy Pearson  
**Communion Bread:** Bob Nickisher  
**Greeter:** Lacey Edwards  
**Lay Asst:** Lacey Edwards  
**Reader:** Jennifer Bentsen

**Sunday, December 15, 2024**

**2:00 PM - Blue Christmas**

**Worship Assistants TBD**

**Sunday, December 22, 2024**

**9:00AM**

(None)

**10:30AM**

**Ushers:** Rosie Gallagher, Carl Seibert  
**Altar Guild:** Esther Seibert  
**Communion Asst:** Bob Bruchak  
**Communion Bread:** Helen Post  
**Greeter:** Rosie Gallagher  
**Lay Asst:** Dick Steltz  
**Reader:** June Kellogg

**Christmas Eve, Tuesday, December 24, 2024**

**4:30PM**

**Ushers:** Melanie Dimovitz, Tom Kellogg  
**Altar Guild:** Jennifer Bentsen  
**Communion Asst:** Peggy Saylor  
**Communion Bread:** Carol Derr-Breinig  
**Greeter:** Carol Derr-Breinig  
**Lay Asst:** Daisy Pearson  
**Reader:** Tom Kellogg

**7:00PM**

**Ushers:** Ken Ritter, Judy Walker  
**Altar Guild:** Janine Ritter  
**Communion Asst:** Sharon Bortz  
**Communion Bread:** Ken & Janine Ritter  
**Greeter:** Ken Ritter  
**Lay Asst:** Sandi Wagaman  
**Reader:** Sharon Bortz

**Sunday, December 29, 2024**

**9:00AM**

(None)

**10:30AM**

**Ushers:** Frank Bennighoff, Cal Fetherolf  
**Altar Guild:** Steph Wagaman  
**Communion Asst:** Anita Eisenhard  
**Communion Bread:** Lisa Newhard  
**Greeter:** Carl & Esther Seibert  
**Lay Asst:** Rosemary Lehman  
**Reader:** Cal Fetherolf



# NORTHEASTERN PENNSYLVANIA SYNOD MONTHLY NEWSLETTER

## A Call to Serve: Bishop deForest on Living Faithfully in Today's World

*"I may be saved for all eternity, just like all of you [in worship this morning]. But I want my first moments in eternity to be surrounded more by people I helped than by people I hurt; by more celebration than condemnation; and by a Jesus more glad at me than mad at me."*

This excerpt from Bishop Christopher deForest's sermon, preached during a service at Maiden creek in Blandon on November 10, captures the heart of his message.

The Gospel lectionary for November 10 was Mark 12:38-44, where Jesus observes people putting money into the temple treasury, noticing a poor widow contributing two small copper coins—all she had to live on. Jesus explains to his disciples that the widow has put in more than all the others, as she gave out of her poverty, while they gave out of their wealth.

Bishop deForest focused his sermon on Lutheranism, particularly since that Sunday was also Martin Luther's birthday. "Martin Luther himself would likely say that this story from the Gospel of Mark is a great example of the kind of things that got Luther all worked up in the first place," said Bishop deForest. He argued that Jesus would not want us just to "be like the widow" or celebrate "sacrificial giving" or "cheerful givers" as illustrated by the widow. Rather, he pointed out that Jesus was expressing strong anger at a system that ignored the plight of the poor and those harmed by economic inequalities and injustice. Bishop deForest compared Jesus' angry response in the Gospel of Mark to the time when Jesus overturned the tables in the temple.



*Bishop Christopher deForest preaching and worshipping at Maiden creek, Blandon on Nov 10, 2024*

He also paralleled the recent election with Jesus' reaction to the widow's offering.

"Lots of people voted, in similar anger. They – or someone they love, care about, feel concern for – are being forgotten," he noted. He reminded us that regardless of political affiliations, Christ died and came to save all of us. Quoting John 3:16, he said, "God so loved the world, that God gave God's only son, that everyone who believes in him, may not perish but may have eternal life." He emphasized, "Eternal life. Forever. Which I will spend, with these same folks. On all sides." That includes the widows and the scribes. The elites and the forgotten. The celebrities and the nobodies.



Bishop deForest concluded his sermon with a call to action: "While we're still here, and we can still offer love like Jesus, healing like Jesus, and side-by-side engagement like Jesus – with our friends and enemies, strangers and neighbors – well then, Jesus calls us out, the same as all his disciples – to get to work, while we can."

To read Bishop Christopher deForest's full sermon in his recent "On The Way" blog visit [godslove.org/onthewaynov11](https://godslove.org/onthewaynov11)

*Submitted by: Stacey Burke, NEPA Synod Communications & Growing Young Coordinator*

# Learning Ministries' Day



Sponsored by the NEPS Faith Formation Resource Ministry Team

January 25, 2025  
8:30am-3:30pm

Jordan Lutheran Church, Orefield

[godslove.org/LMD](https://godslove.org/LMD)

*"What does it mean to be a Christian in a culture that challenges our faith?"*

Registration information available soon

## Muhlenberg College Annual Advent Candlelight Carols

This service is led by the college choirs and members of the Muhlenberg community, adapted from the Festival of Lessons and Carols of King's College, Cambridge University in England.

Though free to attend, you must register. Service will take place on December 7<sup>th</sup> at 7:30pm and December 8<sup>th</sup> at 3:30pm and 7:30pm.

You may find more information as well as a registration link by searching "Candlelight Carols" from the [muhlenberg.edu](http://muhlenberg.edu) homepage.

See the attached flyer for details.



## OPERATION SUNSHINE

Operation Sunshine is a non-profit fellowship opportunity within our Mission District, run solely by volunteers.

1933 Hanover Ave,  
Allentown, PA 18109

Open: Monday 11-3 and  
Wednesday 11-3

Phone: 610-435-9155  
Email: [LMDopsunshine@aol.com](mailto:LMDopsunshine@aol.com)  
[www.LMDopsunshine.com](http://www.LMDopsunshine.com)

Dear Travelers,  
Our shows are sold out for this year, but keep an eye out for next year's newsletter scheduled to be released in December.

Thanks for traveling with Operation Sunshine.

~ Paula & Dick Skelly,  
Co-Trip Coordinators



January 2025 LMD NL news  
will be due December 9, 2024.

Please email any information to  
[lmd.newslettereditor@gmail.com](mailto:lmd.newslettereditor@gmail.com)

## For Unto Us a Child Is Born

Dear Lehigh Mission District,

The Lehigh Mission District Newsletter November edition brought some members within the mission district disappointment because of the sentence, "Many churches in the mission district have been divided over which presidential candidate to elect—a prosecutor or a convicted felon." (Lehigh Mission District Newsletter Volume 29, Issue 10, November 2024, "Look to the LORD").

The words "convicted felon" was the disappointment that was called to my attention in the letter. I was informed that he [former President Donald Trump] was not a convicted felon and that I should not bring the church into politics.

I was under the impression that the conviction of the former US President of 34 felony charges was common knowledge. In hopes to avoid any misinformation below is an article link from the Associated Press, "Guilty: Trump becomes first former US president convicted of felony crimes" by Michael R. Sisak, Jennifer Peltz, Eric Tucker, Michele Price, and Jill Colvin. AP May 31, 2024. <sup>1</sup>

As to the matter of bringing the church into politics here's a link to another article where, "Donald Trump Shares Jesus Comparison While In Court" published on Newsweek, March 25, 2024, by Andrew Stanton. <sup>2</sup>

The Newsweek article points out that "In the Truth Social post comparing himself to Jesus, Trump shared the text of the Bible." The text was Psalm 109:3-8.

It appears that the request to keep the church out of politics is not as taboo as some may lead me to believe in order to refrain from bringing the conversation to this page.

So, if not me, to whom do we leave the conversation of church and politics in the mission district?

Trump's comparisons to Jesus is far-fetched.

As the Church begins a new year with the Advent Season this December, we are reminded of the Christ Child in the words of Isaiah,

*(continued on the next page ⇒)*

## Grace Lutheran Church

### Breakfast with the Elves

(28 West Main Street, Macungie)

December 14, 2024

9:00 – 11:00 AM

As part of the Macungie Holiday and Scavenger Hunt, breakfast will be served downstairs in Fellowship Hall. People may sit down to eat, or grab and go. All donations given as a free will offering will go to Lutheran Disaster Response for hurricane relief efforts in the Southeastern United States.

Please call the church office for more info at 610-966-3325.



## St. Timothy's Lutheran

### Grace Notes Gospel Big Band

(140 S. Ott Street, Allentown)

December 15, 2024 at 3 PM

Please join us for a Christmas concert. A free will offering will be accepted. Stay for a Christmas Cookie Reception afterwards.

Parking available on the street & across the street.

See the attached flyer for details.



## Trinity Memorial Church invites you:

(535 W. Emaus Ave., Allentown)

### CLOTHING CLOSET

1st & 3rd Saturday

Hours: 11:00 AM - 1:00 PM

### PANERA BREAD GIVE AWAY

Pick up on Mondays at 10 AM

Questions? Call the church office at 610-797-4774 or email [tmlcadmn@gmail.com](mailto:tmlcadmn@gmail.com)

(continued from previous page) "For a child has been born for us, a son given to us; authority rests upon his shoulders; and he is named Wonderful Counselor, Mighty God, Everlasting Father, Prince of Peace."

The Church allegiance is to Jesus The Christ, Lord and Savior.


<sup>1</sup>"Guilty: Trump becomes first former US president convicted of felony crimes"

<https://apnews.com/article/trump-trial-deliberations-jury-testimony-verdict-85558c6d08efb434d05b694364470aa0>

<sup>2</sup>"Donald Trump Shares Jesus Comparison While In Court" <https://www.newsweek.com/donald-trump-shares-jesus-comparison-while-court-stormy-daniels-1883109>

In faithful assurance,

The Rev. Nelson Quiñones, Lehigh Mission District Dean



**COMING SOON: Lehigh Mission District Christmas InGathering**  
Wednesday, December 4, 2024  
St. John's Lutheran Church (501 Chestnut Street, Emmaus, PA)  
Thank you for your support with this ministry. We wish all a Blessed Thanksgiving!

## Thanks for Making a Difference for Neighbors in Need!

**THANK YOU** to all the faithful walkers, community leaders, support crew, sponsors and other donors who participated in the **Sunday, October 13, 2024, Greater Allentown CROP Hunger Walk!** You have raised over \$30,000 to help our food-insecure neighbors in the Allentown area and beyond!

**CONGRATULATIONS** to all who received awards at the Opening Ceremony! And special thanks to Mark and Linda Held for making the awards!

- 2023 Golden Sneaker - Faith Presb. Church, Emmaus
- 2023 Silver Sandal - First Presbyterian Church, Allentown
- 2023 Bronze Booty - St. Timothy Luth. Church, Allentown

Special thanks and congrats to **David Pizor** from Blank Slate, who raised \$6760 to celebrate his 60th birthday.



## Many Thanks to Our Generous Sponsors!



And thanks to **St. John Lutheran Church in Emmaus**, whose 30 walkers participated in an intergenerational CROP Hunger Walk to the Emmaus triangle and back during the Sunday School hour on 10/13/24. They also held a special food drive for Groceries PLUS emergency food pantry at Bethel Bible Fellowship in Emmaus.



If you or your congregation/group took any **CROP Hunger Walk PHOTOS or VIDEOS**, please **POST THEM** on social media and **SEND THEM** to [karehad@gmail.com](mailto:karehad@gmail.com) to include in our CROP follow-up emails to congregations and other CROP supporters!

**CHRISTMAS, BIRTHDAY, or ANNIVERSARY GIFT IDEA:**

In honor of loved ones, give the gift of life! **DONATE ANYTIME** to the CROP Hunger Walk at [www.crophungerwalk.org/allentownpa](http://www.crophungerwalk.org/allentownpa)

Alternatively, **CHECKS FOR "CWS/CROP"** may be given through your congregation/group or sent directly to Linda Held, Allentown CROP Hunger Walk Treasurer, 3441 Devonshire Road, Allentown, PA 18103.

The Greater Allentown CROP Hunger Walk helps food-insecure neighbors locally through **the LEHIGH CHURCHES' CONFERENCE KITCHEN** and the **ALLENTOWN AREA ECUMENICAL FOOD BANK**.

Like us on Facebook:

[www.facebook.com/AllentownCROPWalk/](https://www.facebook.com/AllentownCROPWalk/)