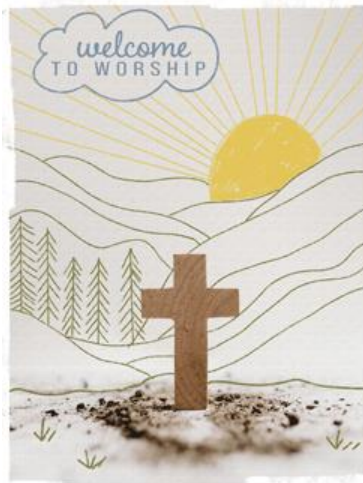


PAUL'S PARISH NEWS



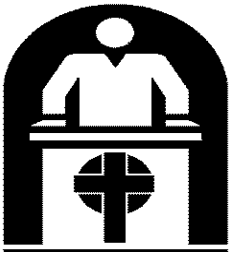
SAINT PAUL'S EVANGELICAL LUTHERAN CHURCH
Breinigsville, PA

FEBRUARY 2025



St. Paul's Evangelical Lutheran Church
8227 Hamilton Boulevard
Breinigsville, PA 18031
Telephone: 610-398-7000

PAUL'S PARISH NEWS is published by St. Paul's Evangelical Lutheran Church



Dear Members and Friends,

A tourist came too close to the edge of the Grand Canyon, lost his footing and plunged over the side, clawing and scratching to save himself. Somehow, he was able to grab hold of a small, shrubby bush. Filled with terror, he called out, “Is there anyone up there? Can anyone help me?” He heard a reassuring voice say, “I’m here: the Lord your God.”

The man said, “I am so glad you came along. I can’t hold on much longer.” The Lord said, “Before I help you, I want to know if you believe in me.” The man answered, “Lord, I certainly believe in you. I go to church every Sunday, sometimes even on Wednesdays. I read my Bible, pray every day, and even put a few dollars in the collection plate.”

The Lord replied, “But do you really believe in me?” The man was getting more desperate. “Lord, you can’t believe how much I believe in you. I believe!”

The Lord said, “Good. Now Let go of the branch.”

The man stammered, “But, Lord . . . “

And the voice of the Lord came back, “If you believe in me, let go of the branch.”

The man was silent for a minute and then yelled, “Is there anyone else up there?”

Faith sometimes means “letting go.” In this society of rampant individualism, we want to control everything around us and not look beyond ourselves. Sometimes we have this idea that faith is what we get from studying the bible, believing the right doctrines, and doing good works. The man “believed” because he went to church, sometimes twice a week, and even put a few dollars in the “collection plate.” But maybe faith is letting go and trusting that God is in control, that *we* are not in control. That is something worth pondering as we live out our daily life.

Blessings,

Pastor Miller

SNOW/CANCELLATION INFORMATION



Winter advisory...Please be sure to check St. Paul's website, www.stpaulsbbville.org or WFMZ storm center to see if any church service or event is cancelled due to snow or ice.

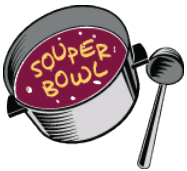


NOTICE OF CONGREGATIONAL MEETING FEBRUARY 9, 2025

POT-LUCK – CHOCOLATE THEME

Please join us for our **chocolate** themed pot-luck (for Valentine's Day) on **FEBRUARY 9th**. Bring your favorite chocolate dessert. The pot-luck will be followed by our annual congregational meeting where we review the ministry of the church.

SOUP-ER BOWL SUNDAY



On Soup-er Bowl Sunday, February 9th, we will collect soup cans or other non-perishable foods and monetary contributions for the local food bank. Root for your favorite team by placing your donations by the respective team logo!

UPCOMING EVENTS FROM THE FELLOWSHIP COMMITTEE

February 9 - Pot Luck Lunch – Chocolate Theme

February 14 – Meal & Movie.

March 7 – Meal & Movie

March 16 – Pot Luck Lunch – St. Patrick's Theme

March 30 – Concert

SIGN-UP SHEETS FOR 2025 BULLETIN & ALTAR FLOWER SPONSORSHIPS

We are in need of bulletin sponsorships for 2025. The price is \$20.00. Call the church office to pick a date to sponsor or check the bulletin board for available dates. Fill out the **white** slip with your name, date you are sponsoring and the wording and place it in the folder under the signup sheet.

Altar Flower Sponsorships are: one vase is \$24.00 or both vases are \$48.00. If you are sponsoring both vases, **PLEASE** sign your name to **BOTH LINES**. Fill out the **blue** slip with your name, date you are sponsoring and the wording and place it in the folder under the signup sheet. Call the church office to pick a date to sponsor or check the bulletin board for available dates.

Leave it to God

Fourth-century theologian Augustine urged again and again that we focus on practicing love in the here and now, not on worrying about our lives in the hereafter.

In *Beautiful Bodies*, Margaret Miles writes that especially regarding complicated doctrines like predestination and challenges like “The one who endures to the end will be saved” (Matthew 24:13), we can’t do anything *but* leave those to God. It’s impossible for humans to take responsibility for ourselves in such matters. If we could determine our afterlife destiny by means of effort, persuasion or bribery, self-pride would surely be the accompanying sinful result.

“In fact,” Miles writes, “preoccupation with one’s eternal destiny distracts from a Christian’s present business. ‘Leave it to God,’ St. Augustine said, and place your attention on living lovingly in the body of Christ here and now.”

PARISH NURSING NOTES

Catherine Waltemyer BSN, RN

January is Glaucoma Awareness Month

Every year most people make their New Years Resolutions, which usually includes things you will do to feel and stay healthy. But, did you realize that feeling your best includes seeing your best too? Learning about glaucoma is a simple thing you can do to help improve your health.

What is glaucoma?

Glaucoma is disease of the eye that can cause vision loss and blindness which can't be reversed.

Glaucoma causes fluid to build up in your eye, causing pressure that can damage the optic nerve, which transfers visual images to your brain.

But, you can save your vision with early detection and treatment.

Are there symptoms?

There are no early symptoms. Glaucoma often has no early warning signs. No pain. No discomfort. No blurry vision. Only advanced glaucoma will affect your vision. Don't wait for symptoms to visit your eye doctor!

Here in the U.S. half the people who have glaucoma don't know they have the disease.

Nearly 3 million Americans have glaucoma. Half don't know it. Lack of awareness and absence of symptoms prevent people from detecting the disease early. You can change that! Find out if you have glaucoma.

Some people are at higher risk than others

African Americans over 40, adults over 60 especially Hispanics/Latinos and people with a family history of glaucoma are at higher risk. These risk factors make early detection especially important.

Are you at higher risk? Talk to your family or your family physician about glaucoma

There is only one way to know if you have glaucoma. Getting a comprehensive dilated eye exam is the only way to find out if you have glaucoma. During the eye exam an eye care professional places drop in your eyes to widen the pupil and look for signs of the disease on the optic nerve.

Now you have the facts about glaucoma! Schedule a comprehensive dilated eye exam today and encourage your family and loved ones to do the same.

To learn more visit www.nei.nih.gov/glaucoma

From: <http://www.nei.nih.gov/glaucoma>.

Valentines for kids

Valentine's Day isn't just for schoolchildren and sweethearts. Loving parents should strive to give their children these life-changing gifts during February and beyond.

- **Acceptance:** Say and show that you love children for who they are. Give this gift with a kiss.
- **Self-confidence:** Help boost kids' trust in themselves. Give this gift with a hug.
- **Peace:** Model how to give your worries to God. Offer this present with laughter.
- **Gratitude:** Help children be genuinely thankful for each new day and for all of life. Give this gift as they go out the door.
- **Faith:** Introduce children to Jesus, the best friend they'll ever have. Do this by taking them to church and Sunday school regularly.

HOSPITALIZED?

Parish Code for hospitalized parishioners is 321. Please give this code when you are admitted to the hospital so the pastor can be made aware that you are a patient and can administer the pastoral care you require while you are hospitalized.

Please take note, that if you are admitted on a Thursday night, Friday, Saturday, or Sunday, the pastor will not be aware that you are hospitalized until Monday mid-morning, since the church does not have office hours on Friday, and the hospital pastoral care office is not available on Saturday or Sunday.

This means, if you would like the Pastor to know you are hospitalized on the weekend, please call the church office or the Pastor



Upcoming Penny Party Fundraiser!!

The former Basket Social Committee is excited to announce plans for a Spring Penny Party and Basket Raffle fundraiser.

The event is scheduled for **April 5, 2025 with doors opening at 11:30AM, and game beginning at 1:00PM.** Seating at this event is limited, so guests are encouraged to come early.

The Penny Party will include approximately 10 baskets, 10-15 gift cards, and 100-200 small items for bidding. We will sell food and beverages similar to the basket social; and will also have a bake sale, with baked goods sold in individual serving sizes.

A Penny Party is a fundraising and social event that combines elements of raffles and silent auctions. Guests buy a set (or several sets) of numbered tickets that they use to bid on small items priced under \$1. Each ticket equals one bid. Guests are seated at tables that are inter-connected, and view items on a tray as it is slid from one table to the next. A change bucket and a ticket bucket accompany each item on the tray. To bid on an item, the bidder puts their money (in change) in the change bucket, and also places a numbered ticket in the ticket bucket. For example – to bid on an item marked 10 cents, the minimum bid must comprise a dime placed in the change bucket, and one ticket placed in the ticket bucket. If the guest wants to bid more than the price – whatever multiple of the price is decided, that is the number of tickets that are required. For example, if a bidder wants to double a bid, they would pay 20 cents and use two tickets; to triple a bid – they would pay 30 cents and use three tickets, and so forth.

Drawings for Penny Party items are done continually during the event, as soon as each item on a tray has made its way across all tables. If the winning number is not claimed immediately, a second drawing is done for that item. Guests must be present to win.

We are starting to collect small items for the Penny Party – in these six categories: 1) Non-Perishable Food/Beverage Items, 2) Household Items, 3) Paper or Office Items, 4) Pet Supplies, 5) Kids' Items, and 6) Personal Care Items. These items should be new or nearly new, and small enough to fit on a 9 x 13 tray. Some examples are cans of soup, pasta packages, box of tissues, pkg of paper plates, small décor items, dog/cat toys, hand cream, etc. Check out our shelves in the Narthex where donations can be placed. All donations are appreciated!

Prayer Shawl Group News



Our next charity crafting project is **Crocheted/Knitted Octopuses for Premies** for St. Luke's Hospital NICU, where they have been using Premie octopuses for years. Check out the display on the Narthex table– where you can find patterns and a sample crocheted octopus. Many thanks to Cathy Waltemyer for getting us copies of the crocheted octopus pattern that St. Luke's uses. If you need help with the pattern, see Steph or bring it

along to Plarn.

Plarn Project/Monthly Working Sessions – Our February Plarn session will be **February 18 at 1:30PM**. Hope to see you there - it is a fun and productive working session. We've submitted 8 sleeping mats so far, so at 700 bags each – we've processed over 5,600 bags!

USHERS/WORSHIP ASSISTANTS ARE NEEDED

We are in need of people to help with the 10:30 a.m. worship service. For the service, worship is the same as before Covid 19 – i.e. hymns are sung, offering is collected in the pew, and communion is taken at the altar. You will be handing out the bulletin, helping to collect offering, and directing the congregation to the altar and handing them a communion cup.

We are always looking for additional worship assistants at the 10:30 a.m. service – especially ushers. Please consider volunteering as an usher, greeter, reader, communion bread supplier, communion assistant, or on altar guild. Even if you can only volunteer at certain times of the year, the scheduler can work around and accommodate busy and varying schedules.

Thank you for your prayerful consideration on assisting in worship. If you would be willing and interested in helping, please contact Steph Wagaman at 610-395-0355 or stepbillwagaman@rcn.com or call the church office at 610-398-7000.

WOMEN OF THE EVANGELICAL LUTHERAN CHURCH [WELCA]



Our Soup and Sandwich Sunday on January 5, 2025, was a very interesting event. Judy Wanfried spoke on different eras of paintings of The Last Supper. She had reproductions of different painters and discussed the individual paintings, how each painter depicted The Last Supper..

The mailing of *The Flame* is scheduled for the end of January and will have information and registration forms for the following NEPA WELCA Events:

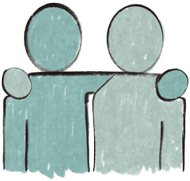
- Spring Justice Event, *Protecting Our Children*, scheduled for March 29, 2025, at Christ United Lutheran Church in Ashland, PA.
- 35th Annual Convention, *Renew Yourself with Gods Word*, scheduled for June 14, 2025, St. John’s Nazareth.

ALL WOMEN ARE INVITED TO THESE EVENTS

Our January Bible study was Faithfulness....*Session one...Faith where you are: Ruth and Naomi* by Denis Rector.

Join us on Wednesday, February 12, 2025, at 9:30 a.m.

“I am here”



In *Bread for the Journey*, theologian Henri J.M. Nouwen calls consolation — from “to be with” (con-) “the lonely one” (solus) — “one of the most important ways to care.” He writes, “Life is so full of pain, sadness and loneliness that we often wonder what we can do to alleviate the immense suffering we see.”

Although consoling doesn’t necessarily remove someone’s pain, Nouwen notes that it serves a deeper purpose: To console means “to be there and say, ‘You are not alone, I am with you. Together we can carry the burden. Don’t be afraid. I am here.’ That is consolation. We all need to give it as well as to receive it.”

CARD MINISTRY



Here at St. Paul's we send cards to members of the congregation who are ill or in need of a cheerful word. These cards are on the table in the narthex. When you are here on a Sunday, or during the week, check the table to see if there is a card. Please sign your name and help bring a smile to a fellow member.

To the members and friends of St. Paul's,



Thank you for your prayers, cards, messages and words of encouragement for my knee replacement surgery in December. Thank you to Pastor Miller for his hospital visit the day of surgery and his text messages.

Who would have ever thought that by doing the exercises I would break my knee cap on the same leg and need more surgery? Keep me in your prayers and I'll get back as soon as I can.

Cindy Krasnansky



Thank you for the cards, calls, and visits following my recent surgery. It helped to know that the church family was thinking of me. I'm glad to be back.

Judy Noll



- | | |
|---------------------------|---------------------|
| 2 Martine Hemmelgarn-Otto | 12 Lillian Sicher |
| 5 Dick Steltz | 14 Mary Schneider |
| 8 Zack Dimovitz | 15 Amanda Mesko |
| 9 Rosalie Gallagher | 17 Cindy Mount |
| 9 George Sanchez | 18 Denise Trainor |
| 9 Avery Thompson | 21 Skip Eisenhard |
| 10 Tom Kellogg | 21 Cindy Krasnansky |
| 10 Carey Miller | 24 Mark Maslany |
| 12 Lacey Edwards | 29 Alan Brumbach |

Puzzle!

Use the clues to fill in the boxes. Then write those letters on the correct numbered lines below to complete 1 John 4:16 (NIV).

A place to live

1	2	3	4	5

Opposite of dark

6	7	8	9	10

Companion

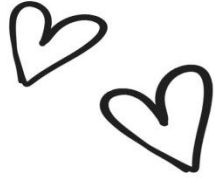
11	12	13	14	15	16

Hand greeting

17	18	19	20

Male adult

21	22	23



8 2 16 13 4 6 2 19 5

17 9 2 5 19 5 12 6 7 19 5 4

13 15 6 2 19 20 6 7 19 14 4

13 15 8 2 16 18 15 16

8 2 16 13 23 10 1 14 21

1 John 4:16, NIV

Answers: house, light, friend, wave, man; God is love. Whoever lives in love lives in God, and God in them. 1 John 4:16, NIV

**DEADLINE FOR THE NEXT
NEWSLETTER IS
FEBRUARY 16, 2025**

**PLEASE HAVE YOUR
ARTICLES SUBMITTED TO
THE CHURCH OFFICE
BY THIS DATE.**



CHURCH OFFICE: 610-398-7000
HOSPITAL CODE: #321
HANDICAPPED ACCESSIBLE
EMAIL: office@stpaulsville.org
Website: www.stpaulsville.org

STAFF

Pastor..... The Rev. Carey L. Miller
Organist/Choir Director Ms. Judy Noll
Handbell Director..... Mr. Richard Steltz
Parish Secretary Mrs. Cindy Krasnansky

February 2025 St. Paul's Lutheran Church

SUNDAY	MONDAY	TUESDAY	WEDNESDAY	THURSDAY	FRIDAY	SATURDAY
						1
2 FOURTH SUNDAY AFTER EPIPHANY 9:00 a.m.-Worship 9:15 a.m.-Sunday School 10:30 a.m.-Worship	3 9:30 a.m.-Bible Study	4 7:00 p.m. – Penny Party	5	6 9:30 a.m.-TOPS 6:15 p.m.-Joyful Ringers 7:30 p.m.-Choir	7	8
9 FIFTH SUNDAY AFTER EPIPHANY 9:00 a.m.-Worship 9:15 a.m.-Sunday School 10:30 a.m.-Worship 11:30 a.m.-Congregational Meeting & Potluck Lunch w/Chocolate Desserts	10 9:30 a.m.-Bible Study	11	12 9:30 a.m.-W-ELCA 7:00 p.m.-Council	13 9:30 a.m.-TOPS 6:15 p.m.-Joyful Ringers 7:30 p.m.-Choir	14 6:00 p.m. – Meal 7:00 p.m. - Movie	15
16 SIXTH SUNDAY AFTER EPIPHANY 9:00 a.m.-Worship 9:15 a.m.-Sunday School 10:30 a.m.-Worship NEWSLETTER DEADLINE	17 9:30 a.m.-Bible Study	18 1:30 p.m.-Plam	19	20 9:30 a.m.-TOPS 6:15 p.m.-Joyful Ringers 7:30 p.m.-Choir	21	22
23 SEVENTH SUNDAY AFTER EPIPHANY 9:00 a.m.-Worship 9:15 a.m.-Sunday School 10:30 a.m.-Worship	24 9:30 a.m.-Bible Study	25	26	27 9:30 a.m.-TOPS 6:15 p.m.-Joyful Ringers 7:30 p.m.-Choir	28	

WORSHIP ASSISTANTS

February 2025

If you cannot fulfill an assigned duty, please call the church office at 610-398-7000 or the Council Person of the Month – Jennifer Bentsen 484-226-5227

Sunday, February 2, 2025

9:00AM

No Assistants

10:30AM

Ushers: Andrew Bruchak, Bob Bruchak

Altar Guild: Esther Seibert

Communion Asst: Sharon Bortz

Communion Bread: Esther Seibert

Greeter: Cal Fetherolf

Lay Asst: Dick Steltz

Reader: Sandi Wagaman

Sunday, February 16, 2025

9:00AM

No Assistants

10:30AM

Ushers: Frank Bennighoff, Zack Dimovitz

Altar Guild: Rosemary Lehman

Communion Asst: Tom Kellogg

Communion Bread: Melanie Dimovitz

Greeter: Alice Bastian

Lay Asst: Sandi Wagaman

Reader: June Kellogg

Sunday, February 9, 2025

9:00AM

No Assistants

10:30AM

Ushers: Jennifer Bentsen, Peggy Saylor

Altar Guild: Jennifer Bentsen

Communion Asst: Anita Eisenhard

Communion Bread: Dorothy O'Connors

Greeter: Mary Schneider

Lay Asst: Rosemary Lehman

Reader: Sharon Bortz

Sunday, February 23, 2025

9:00AM

No Assistants

10:30AM

Ushers: Lacey Edwards, Amy Williams

Altar Guild: Amy Williams

Communion Asst: Bob Bruchak

Communion Bread: Bob Nickisher

Greeter: Madeline MacMechan

Lay Asst: Sharon Bortz

Reader: Daisy Pearson

Christmas Eve Family Service



A Christmas Nativity

By Audrey Waters/Take It and Teach©



December 24, 2024

REMINDERS to the Lehigh Mission District Rostered Leaders

*Please keep the following
dates on your calendars:*

January 8, 2025 - Insights
from the Allentown
Collaborative
Group Presentation

February 12, 2025 - State of
Lutheran Social Ministries
The Rev. Dr. Woody Maxon

March 12, 2025 - Topic: Calls
to Ministries
The Rev. Jira Albers, Licensed
Lay Ministry Director

April 9, 2025 - State of
the Synod
Bishop Christopher deForest

May 4, 2025 - LMD Spring
Assembly at 4:00 P.M.
Lutheran Center, Allentown

May 30-31, 2025 - Synod
Assembly "Connect the Dots!"
Christ Hamilton United
Lutheran Church
(419 Bossardsville Road,
Stroudsburg, PA)

June, July, August - OFF

*Event updates will be made
available at meetings and
here, in the LMD Newsletter.*



*February 2025 LMD NL news
will be due January 13, 2025.*

Please email any information to
imd.newslettereditor@gmail.com

From our Living Room to a Public Faith

Dear Lehigh Mission District,

Jesus said, "I give you a new commandment, that you love one another. Just as I have loved you, you also should love one another. By this everyone will know that you are my disciples, if you have love for one another." *John 13:34-35*

The concerns brought to the December Rostered Ministers' Monthly Zoom Meeting with Bishop Christopher deForest of the Northeastern Pennsylvania Synod were stressful.

Why were these ministers stressed out and concerned? Because of the possible effects of the recent election.

The tense conversation crept through my zoom screen and into my living room.

People talked about the prospect of mass deportation with the separation of immigrant families and how this will affect the church. Ministers expressed concerns for the emotional mental health for sexual abuse survivors. Others expressed concerns about affordable healthcare.

Our Lutheran churches in the mission district have two positions to take. The first is to do what the church does best in these tense moments and pray. For some, prayers help numb the decisions that led to this outcome. As people of prayer, the second position is for the church to come out of the privacy of our living room and into the public arena.

Jesus calls the church to love their neighbor.

To this end, Bishop deForest presented Eleven Points shared in consultation with other bishops:

- Stay grounded; rest is resistance
- Connect to local networks for bystander training, rapid response, sanctuary
- Reach out to vulnerable populations/members and let them know that they are not alone
- Form networks of solidarity for action
- Help families that anticipate separation (undocumented parents with citizen children) make a plan
- Connect with others throughout the synod
- Activate community organizing networks

(continued on the next page ⇒)

St. John's Lutheran Church
(501 Chestnut Street, Emmaus)

A German Christmas Service
January 5, 2025 at 5:45 PM

A service spoken and sung in German. Guest musicians: Ted & Sarajane Williams on classical guitar and harp.

A German cookie and coffee fellowship to follow.

See the attached flyer for details.

Trinity Memorial Church invites you:

(535 W. Emaus Ave, Allentown)

CLOTHING CLOSET

1st & 3rd Saturday
Hours: 11:00 AM - 1:00 PM

PANERA BREAD GIVE AWAY

Pick up on Mondays at 10 AM

Questions? Call the church office at 610-797-4774 or email tmlcadmn@gmail.com

OPERATION SUNSHINE

Operation Sunshine is a non-profit fellowship opportunity within our Mission District, run solely by volunteers.

1933 Hanover Ave,
Allentown, PA 18109

Open: Monday 11-3 and
Wednesday 11-3

Phone: 610-435-9155
Email: LMDopsunshine@aol.com
www.LMDopsunshine.com

Paula & Dick Skelly,
Co-Trip Coordinators

Dear Travelers,
Hope this message finds you all well and happy. We are sending you an early Christmas present - our Operation Sunshine Newsletter January through June 2025 (see attached). We look forward to a new season of traveling with you.

Have a wonderful holiday season and we'll see you in the new year.

~Paula & Dick

(continued from previous page)

- Make sure that we are not funding the deportation apparatus and that our investments/retirement/endowments are screened for GeoCorp and other private prison corporations that are ramping up
- Share broadly with others helpful authors, books, essays (Bonhoeffer, etc.)
- Resist Christian nationalism at every level of our church
- Focus on discipleship

In addition, the Evangelical Lutheran Church in America's website provides a "Supportive Spaces" group that is a confidential support group for faith leaders to engage in conversation in these transitional times.

It is my hope that we can join together in our public faith for our neighbors in the mission district.

The peace of the Lord be with you,
The Rev. Nelson Quiñones, Lehigh Mission District Dean



Lehigh Mission District Christmas InGathering:
Wishing you a Most Blessed Christmas and Healthy New Year!

Thank you for all your support with the Annual Christmas InGathering. It is a blessing to serve and help many people, God's work in action. We are grateful for St. John's Lutheran Church for sponsoring us.

Thanks for Making a Difference for Neighbors in Need!

THANK YOU to all the faithful walkers, community leaders, support crew, sponsors and other donors who participated in the Sunday, October 13, 2024, 45th Annual Greater Allentown CROP Hunger Walk!

You have raised **OVER \$30,000** to help our food-insecure neighbors in the Allentown area and beyond!

As a result of your generosity, the **LEHIGH CHURCHES' CONFERENCE KITCHEN** and the **ALLENTOWN AREA ECUMENICAL FOOD BANK** will be receiving more than \$3700 each for their vital ministries with neighbors experiencing food insecurity in our area. And **CHURCH WORLD SERVICE** will be able to help many more of our neighbors who are struggling in the aftermath of floods, fires, droughts, and other disasters throughout the United States and the world.

CONGREGATIONS/GROUPS: So that we can celebrate more precise YTD totals, please send your CROP gifts ASAP to Linda Held, Allentown CROP Hunger Walk Treasurer, 3441 Devonshire Road, Allentown, PA 18103.

If you or your congregation/group took any **CROP Hunger Walk PHOTOS or VIDEOS**, please **POST THEM** on social media and **SEND THEM** to karehad@gmail.com to include in our follow-up emails to congregations and supporters!

CHRISTMAS, BIRTHDAY, or ANNIVERSARY GIFT IDEA:
In honor of loved ones, give the gift of life! **DONATE ANYTIME** to the CROP Hunger Walk at www.crophungerwalk.org/allentownpa

Alternatively, **CHECKS FOR "CWS/CROP"** may be given through your congregation/group or sent directly to Linda Held, Allentown CROP Hunger Walk Treasurer, 3441 Devonshire Road, Allentown, PA 18103.

